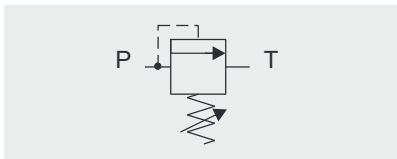
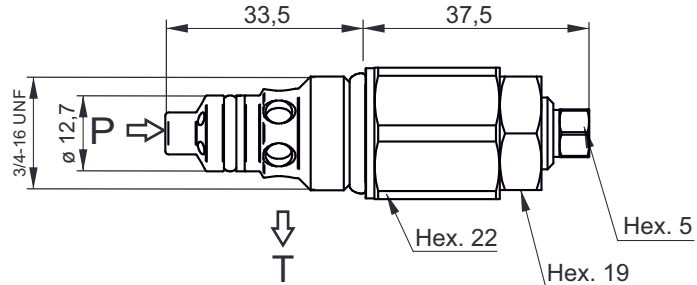


SAE08 DIRECT ACTING MAIN RELIEF VALVE

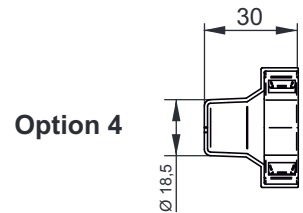
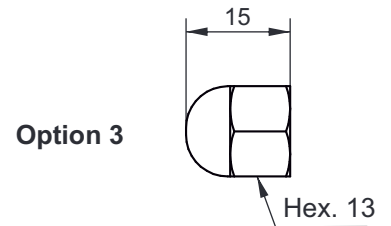
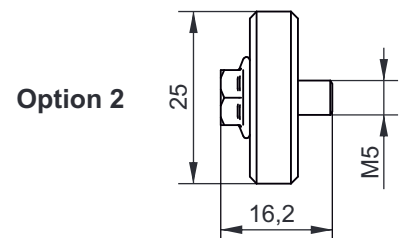


Main features

Max pressure	390 bar
Weight	0.14 Kg
Max flow	30 l/min
Tightening torque	30 Nm
Fluid temperature	-30°C ÷ +80°C
Filtration	ISO 4406
Cavity	SAE08-2

Spare part code

- VMDC** — Relief valve
- 20** — Nominal size:
20 = 20 l/min
- B** — Working range:
A = 3 ÷ 50 bar
B = 40 ÷ 150 bar
C = 40 ÷ 250 bar
D = 70 ÷ 350 bar
- 1** — Option:
1 = M6 screw (std)
2 = handwheel
3 = with cap
4 = plastic seal

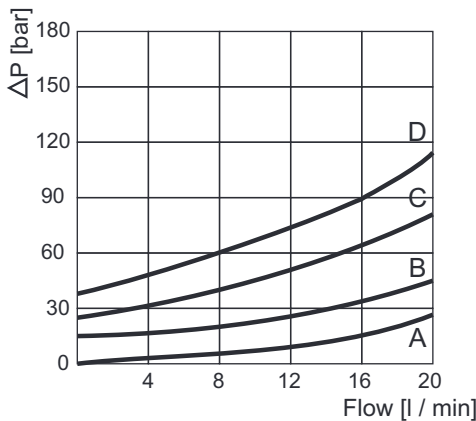


Assembly code

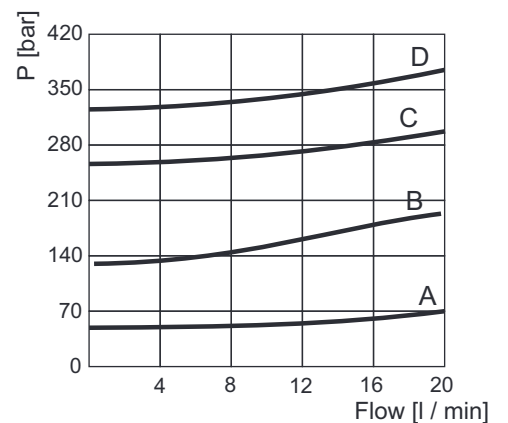


where *** stands for max setting pressure [bar]. Ex. V250
where ♦ is the option

Minimum setting pressure



Pressure vs Flow



Note: Values measured on valve alone (no cavity) with an oil viscosity of 46 cSt at 50 °C. Pressure drop may change depending on fluid viscosity and temperature